

P R O D U C T S  
C A T A L O G U E

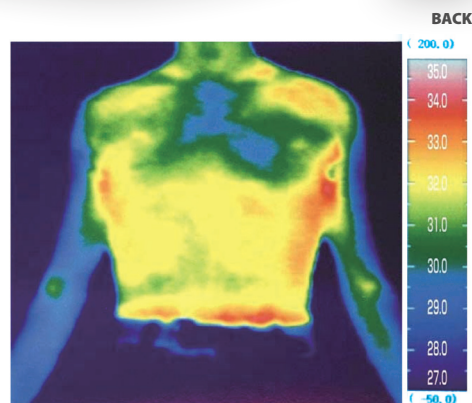
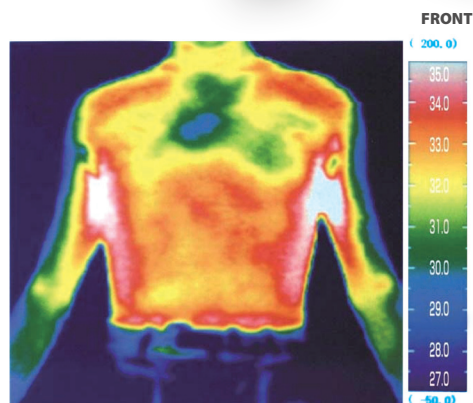
**STORMM**  
**RIDE**



[www.StormmRide.com](http://www.StormmRide.com)



## 96.1 IWON SCS SHIRT 1,5 MM



STORMM RIDE PRODUCTS CATALOGUE

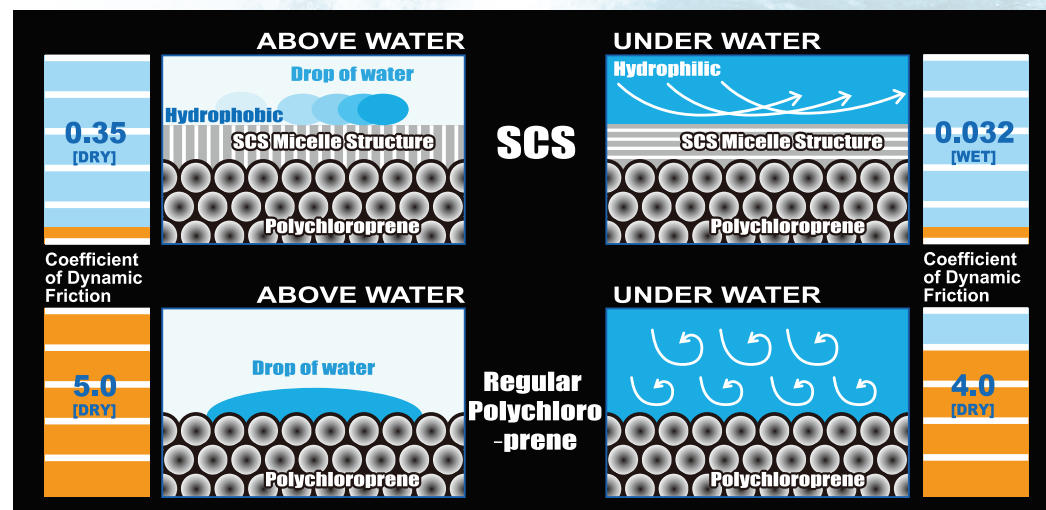
S.C.S. is a very unique material which by special processing is applied as a coating / layer over the surface of independent closed cell polychloroprene. The micelle structure on the rubber surface repels water when in contact with air, and reduces the surface resistance when in contact with water. The coefficient of surface resistance is under 1/10 of conventional smoothskin in the dry and 1/100 in the wet. This super low resistance of S.C.S. gives marine suits many functional advantages. S.C.S. is an extremely revolutionary material which now allows the development of a new type of concept in marine suits.

### Increased Speed ! (Efficiency when S.C.S. is used outside garment)

Super low resistance of S.C.S. in the water makes it possible to dive / swim much faster. S.C.S. allows the needs of divers, triathletes and swimmers to be achieved, that is "Faster Speed".

- Light Weight** >> S.C.S. does not absorb water.
- High Stretchability** >> S.C.S. provides comfort and extra freedom of movement.
- High Heat Insulation** >> S.C.S. keeps the body warmer decreasing body fatigue.
- High Durability** >> S.C.S. is very durable and abrasion resistant.

### HYDROPHOBIC PROPERTIES IN THE AIR, HYDROPHILIC IN THE WATER





## 1 1.1 SPRAYDECK NEOPRENE SD

3 mm neoprene, glued blind stitched seams, latex seal, 10 mm bungee rope

**11.11** Snyder 75 cm

**11.12** Snyder braces 75 cm

**11.13** Slalom 75 cm

**11.14** Spraydeck Snyder deck L 86 cm



## 1 1.2 SPRAYDECK ESCAPE

3 mm neoprene, glued blind stitched seams, latex seal, 10 mm bungee rope, stretchy 3D prints

**11.21** cockpit L ~ 86 cm

**11.22** cockpit XL ~ 93 cm

**11.23** cockpit XXL ~ 100 cm

**11.24** cockpit XXXL ~ 110 cm



## 1 1.3 SPRAYDECK GRAN TURISMO GT

3 mm neoprene, glued blindstitched seams, latex seal, 10 mm bungee rope, stretchy 3D print, Waist waterproof fabric waist tube with velcro adjustment, adjustable elastic braces, zipped pocket

**11.31** cockpit L ~ 86 cm

**11.32** cockpit XL ~ 93 cm

**11.33** cockpit XXL ~ 100 cm

**11.34** cockpit 3XL ~ 110 cm



## 1 1.4 SPRAYDECK SUPRATEX NEOPRENE DECK

3 mm neoprene, glued blind stitched seams, stretchy abrasion resistant neoprene Supratex, reinforcement, latex seal, 10 mm bungee rope, stretchy 3D prints

**11.41** Spraydeck SNYPER S 75 cm

**11.42** Spraydeck DRIFT L 86 cm

**11.43** Spraydeck DRIFT XL 86 cm





## 1 1.9 COCKPIT COVER

3 mm neoprene, 10mm bungee rope

- 11.91** cockpit M ~ 75 cm
- 11.92** cockpit L ~ 86 cm
- 11.93** cockpit XL ~ 93 cm
- 11.94** cockpit XXL ~ 100 cm
- 11.95** cockpit XXXL ~ 110 cm



## 1 2 NEOPRENE SPRAYDECK KEVLAR ARAMID

3 mm neoprene, glued blind stitched seams, kevlar / aramid reinforcement, latex seal, 10 mm bungee rope, stretchy 3D prints

- 12.1** SNYPER RS kevlar aramid M 75`
- 12.2** SNYPER RS kevlar aramid braces M 75`
- 12.3** Naval L ~86 cm
- 12.4** Naval L ~86 cm braces



## 1 9 NEOPRENE SPRAYDECK PURE WHITE NATIONAL

3 mm neoprene laminated high density nylon, glued blind stitched seams, kevlar / aramid reinforcement (Polo), latex seal, 10 mm bungee rope, stretchy 3D prints

- 19.1** Pure White Polo Kevlar
- 19.2** Pure White Polo Kevlar braces
- 19.3** Pure White 75` Slalom Polo



## 1 9.9 WHITE DECK FULL COLOUR PRINT

- 19.91** White M Polo 75` full colour print





## 22 NYLON SPRAYDECK K1 SPRINT

Waterproof nylon, taped seams, neoprene belt, pull handle

- 22.1 Sprint k1 black
- 22.2 Sprint k1 white
- 22.3 Sprint k1 red
- 22.4 Sprint k1 blue
- 22.5 Sprint k1 red white
- 22.6 Sprint k1 blue white
- 22.7 Sprint k1 green yellow
- 22.8 Sprint k1 yellow HF high visible
- 22.9 Sprint k1 Maraton zip
- 22.X Youth – Small multisize tube, for each colours



## 41 NYLON SPRAYDECK WEEKEND HD

Waterproof nylon, taped seams, pull handle

- 41.1 cockpit L ~ 86 cm
- 41.2 cockpit XL ~ 93 cm



## 42 NYLON SPRAYDECK HD

Waterproof nylon 300D, taped seams, implosion bar, reinforced sleeve for rims, pull handle

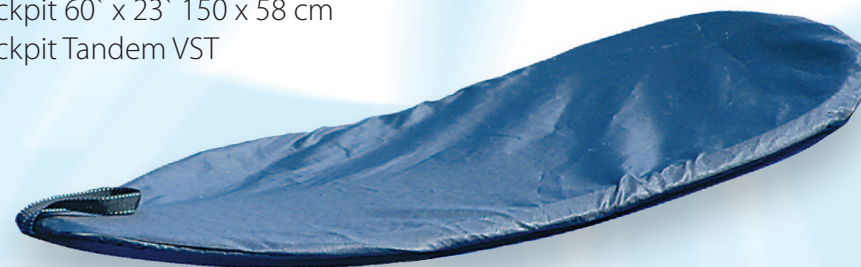
- 42.1 cockpit XXL ~ 100 cm; Caroline
- 42.2 cockpit XXXL ~ 110 cm; Sundancer
- 42.3 cockpit 52' x 22' 130 x 55 cm
- 42.4 cockpit 60' x 23' 150 x 58 cm
- 42.5 cockpit Roteko Smart



## 49 NYLON COCKPIT COVER

nylon HD, straps, pull handle

- 49.1 cockpit L ~ 86 cm
- 49.2 cockpit XL ~ 93 cm
- 49.3 cockpit XXL ~ 100 cm; Caroline
- 49.4 cockpit XXXL ~ 110 cm; Sundancer
- 49.5 cockpit 52' x 22' 130 x 55 cm
- 49.6 cockpit 60' x 23' 150 x 58 cm
- 49.9 cockpit Tandem VST





## 5 1 NYLON SPRAYDECK TANDEM

**taped seams, pull handle**

**51.1** VST velcro, HD nylon, instalation kit

**51.2** VST zippers, one piece



## 6 1 KAYAK COVER

**Waterproof nylon laminated sponge nylon inner, sandwich tehcnology, thickness 3 mm to 10 mm OEM orders**

**61.11** Kayak Polo Bag

**61.12** Kayak K1 Bag

**61.13** Kayak K2 bag

**61.14** Kayak K4 bag



**UV foil on glass fabric laminated sponge, nylon inner, sandwich technology**

**61.21** Kayak Polo Bag

**61.22** Kayak K1 Bag

**61.23** Kayak K2 Bag

**61.24** Kayak k4 Bag



## 7 1 ACCESORIES

**71.1** Gloves Poogies  
3 mm neoprene, velcro

**71.2** Gloves Poogies small

**71.3** Vest NRG  
3 mm neoprene, flatlock seams

**71.31** VEST NRG Man

**71.32** VEST NRG Woman

**71.4** Short pants F Trik  
3 mm neoprene, flatlock seams, stretchy 3D prints  
Available size: XS, S, M, L, XL, XXL



**71.5** Shrt pants  
3 mm neoprene, flatlock seams, glideskin  
neoprene seals  
Available size: XS, S, M, L, XL, XXL

**71.8** NoMad  
3 mm neoprene , best protection  
for back bones and hips

**72.8** Windproof Mitts  
Nylon Yellow HF





## 81.1 BACKREST COMFO PAD

10 mm, 38 x 31 cm, nylon laminated sponge

**81.11** Backrest Pad with neoprene sleeve and velcro straps

**81.19** Backrest Pad for glue instalation



## 81.2 COMFO SEAT PAD

10 mm, 38 x 31 cm, nylon laminated sponge

**81.21** Comfo Seat Pad with seat pad with trimming on edge

**81.29** Comfo Seat Pad for glue instalation



## 81.3 FREESTYLE BACKREST



## 91 IRON DRY PANTS

Made of waterproof breathable material;  
Watervapour Permeability (g/m2/24h)  
~3000; Hydrostatic Head (mm) original  
10000, double waist equipped against  
water, some places reinforced against  
abrasion, neoprene seals on calves, wide  
neoprene waist with symmetric Velcro  
fastening

Available size: XS,S,M,L,XL,XXL





## Stormm Ride

PL 85-738 Bydgoszcz, ul. Szajnochy 3

tel. 00 48 601 66 54 77, 00 48 501 74 04 75

e-mail: stormmride@gmail.com, e-mail: info@stormmride.com

[www.piankineoprenowe.pl](http://www.piankineoprenowe.pl), [www.stormmride.com](http://www.stormmride.com)

VIES PL9670120863

**STORMM**  
**RIDE**

